

9 Maintain a risk zone to ensure that bystanders are kept at a safe distance during the crown breakdown and until all parts of the tree are stable.

10 Never work underneath any part of the felled tree.

11 It is important to continually assess the tension in the branches, especially those supporting the main stem.

12 Cut away all the smaller branch wood to shoulder height, retaining the main supporting branches and the stem (see Figure 1).

13 Before cutting the heavier branches, clear the work area of debris so that you can stand securely. Assess any potential movement of the tree.

14 Where possible reduce the length of heavy branches gradually, rather than cutting them off at the stem.

15 Where branches are above shoulder height, roll the trunk under the control of the winch to bring in the remaining branches to a safe cutting height.

16 De-limbing flush to the trunk should be done once all branches have been removed and all the timber is in a stable position on the ground.

Further Information and Guidance:

Visit our website at www.hsa.ie, telephone our contact centre on **0818 289 389** or email contactus@hsa.ie

Use BeSMART, our free online risk assessment tool at www.besmart.ie
Check out our range of free online courses at www.hsalearning.ie

HSA

An tÚdarás Sláinte agus Sábháilteachta
Health and Safety Authority

Further reading

Available at www.hsa.ie/eng/Publications_and_Forms/Publications/Agriculture_and_Forestry/

- Code of Practice for Managing Safety and Health in Forestry Operations
- Information on Health and Safety Responsibilities of Forest Landowners who intend to fell their trees
- Guide to Safe Working with Timber and Chainsaws
- Chainsaw Safety Training Advice Information Sheet

IFSG Leaflets:

- 301 - Using Petrol Driven Chainsaws
- 302 - Basic Chainsaw Felling and Manual Takedown
- 303 - Chainsaw Snedding
- 304 - Chainsaw Cross Cutting and Manual Stacking
- 306 - Chainsaw Clearance of Windblow
- 307 - Chainsaw Felling of Large Trees
- 503 - Extraction by Forwarder
- 603 - Mechanical Harvesting
- 804 - Electricity at Work: Forestry

In association with



This information has been modified for Irish use by kind permission of the Forest Industry Safety Accord (FISA) Email: info@ukfisa.com

This guide sets out evidence of good practice for a specific forestry task. Deviation from the guide should only be considered after a full risk assessment has been undertaken by competent persons. Health and safety obligations MUST be met at all times.

Published in October 2018 by the Health and Safety Authority, Metropolitan Building, James Joyce Street, Dublin 1. All rights reserved.

HSA

An tÚdarás Sláinte agus Sábháilteachta
Health and Safety Authority

Chainsaw Felling of Large Trees

Irish Forestry Safety Guide
(IFSG)
307



Introduction

This leaflet covers the felling and crown breakdown of large trees in plantations or of single large trees. It does not cover exceptional situations where the risk assessment shows advanced or alternative felling techniques, beyond those normally applied to large trees, are required. In such circumstances, seek specialist advice and agree safe methods of working. You can use this leaflet, along with the chainsaw manufacturer's handbook, as part of the risk assessment process to help identify the controls to put in place when felling large trees. You must also assess the effect of the site and the weather as well as following this guidance.

All operators must have had appropriate training in how to operate the machine and how to carry out the tasks required (see Chainsaw Safety Training Advice Information Sheet).

For guidance on personal protective equipment (PPE), the machine, preparing to work, maintenance, fuelling and starting procedures see IFSG leaflet 301 Using petrol-driven chainsaws. The basic felling principles identified in IFSG 302 leaflet Basic Felling by Chainsaw and Manual Takedown must be read and applied in conjunction with this leaflet. However, the crown spread, depth, branching habit, size and surroundings of large trees create particular risks that need knowledge and techniques beyond that for basic felling, snedding and cross-cutting.

Tools required

- 1 The following aid tools should be available:
 - a sledgehammer;
 - wedges; and
 - an appropriately rated winch.

2

3

4

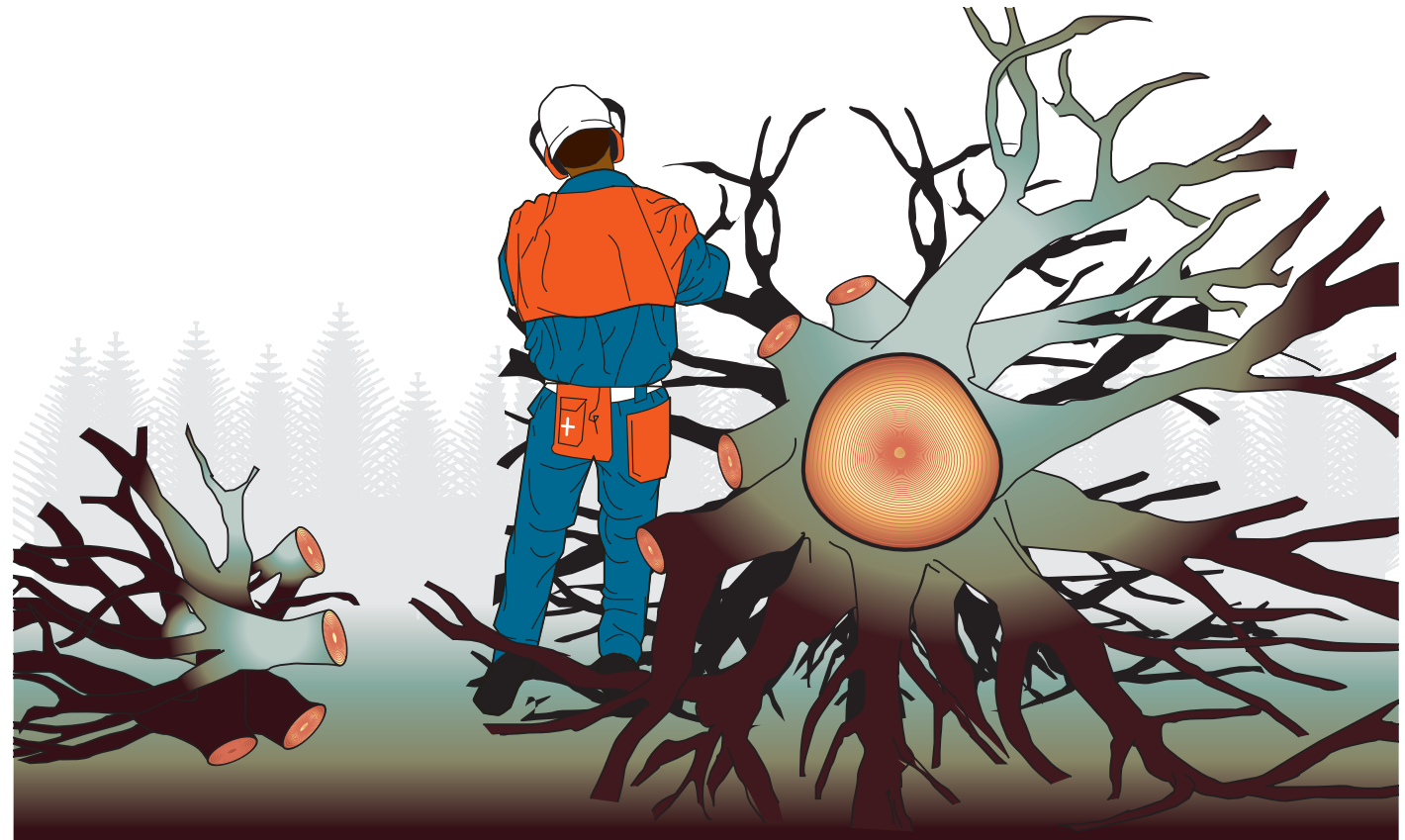


Figure 1:
Retention of supporting branches

Felling

- 2 Ensure that no other person is within a distance equal to twice the height of the tree to be felled and never directly below on steep slopes.
- 3 Be aware that wood from the crown can travel a considerable distance when the tree hits the ground. A risk zone must be established.
- 4 Where branch wood is used to cushion the impact of the falling tree, only use light material which is as long as possible.

- 5 The felling cuts should be proportional to the tree's diameter, size, species and the potential for decay.

Crown breakdown

- 6 Crown breakdown can be very dangerous and the operator must always be prepared for the tree rolling or for springback when cutting branches.
- 7 Ensure that the tree is kept in a stable condition during crown breakdown, if necessary by securing it with a properly anchored winch.
- 8 Plan the sequence of work so that an escape route is clear and available at all times.