

Slips, trips and falls on the same level are serious and account for about a fifth of all accidents notified to the Health and Safety Authority. Many of these slips, trips and falls lead to serious injuries. This tool is aimed at employers. It is designed to help identify areas where slips, trips and falls have happened and also where slips and trips are more likely to happen. The document should be used in conjunction with [Get a grip](http://www.hsa.ie/eng/Topics/Slips_Trips_Falls/) at http://www.hsa.ie/eng/Topics/Slips_Trips_Falls/

There are three simple steps to slips, trips and falls mapping

Step 1 Draw a map

Draw a map of your workplace. This could be a sketch map. There's no need to have a professional draw this up for you. The map/plan need not be entirely accurate or exactly to scale.



Step 2 Mark incidents

Mark locations of slip, trip and fall incidents. It's a good idea to mark these items in red so that they stand out. The accident book and accident records should help with this. It may be helpful to include the incident dates and times. For external areas it may be helpful to also indicate weather conditions when the incident occurred. Near misses should also be shown. Consult employees and other people working in the same workplace, e.g. cleaners, to assist in identifying these areas. You can use photographs with the mapping tool if you want to. Digital cameras could be used to photograph and record slips and trips problems in the workplace.



Step 3 Implement safeguards

[Get a grip](http://www.hsa.ie/eng/Topics/Slips_Trips_Falls/) at http://www.hsa.ie/eng/Topics/Slips_Trips_Falls/ provides guidance on safeguards that can be put in place. Consult employees and other people working in the same workplace, e.g. cleaners.



Further Information and Advice

[Get a grip](http://www.hsa.ie/eng/Topics/Slips_Trips_Falls/Get_a_Grip.pdf) at http://www.hsa.ie/eng/Topics/Slips_Trips_Falls/Get_a_Grip.pdf

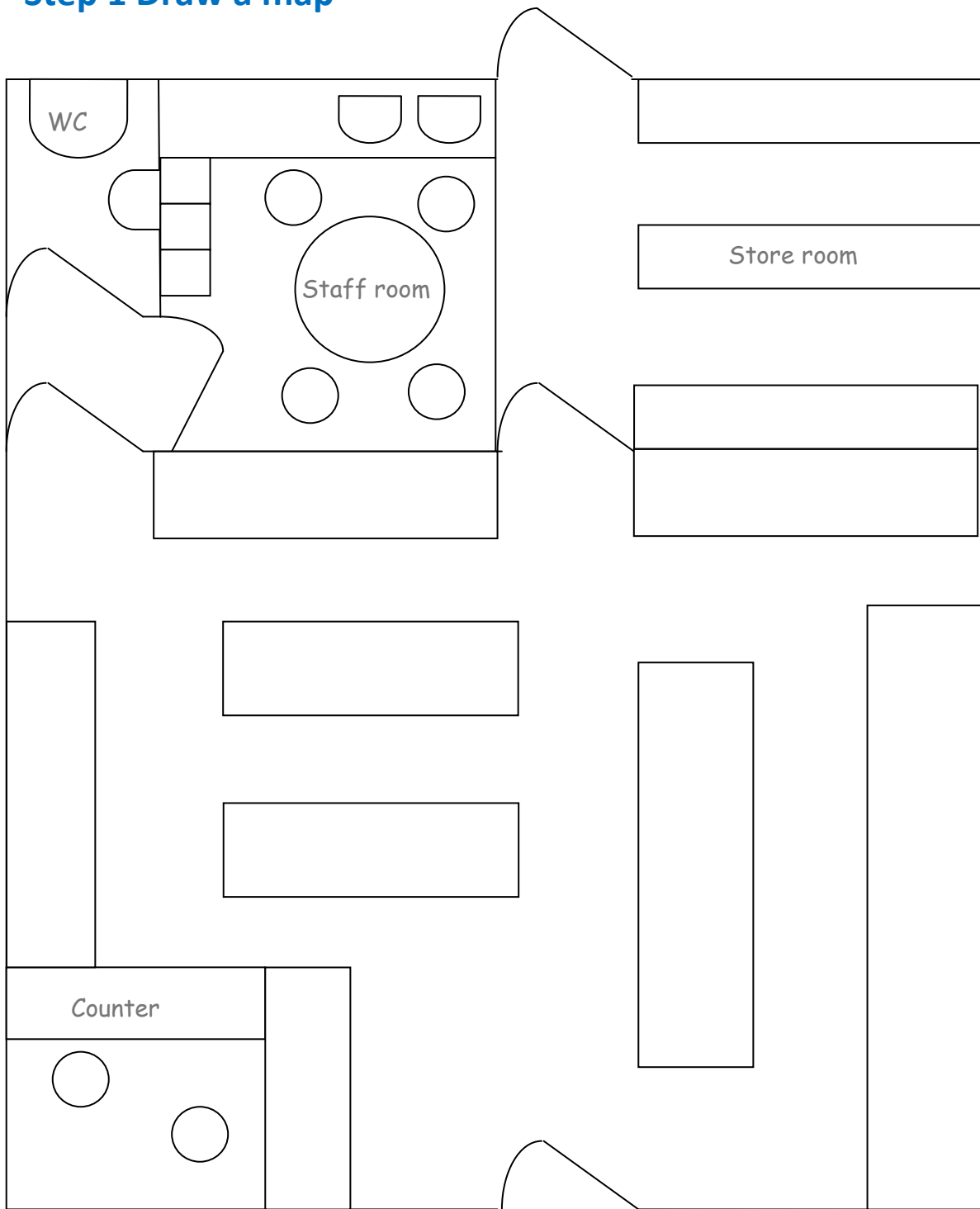
Section 1.5. of [Safe Hospitality](http://www.hsa.ie/eng/Publications_and_Forms/Publications/Retail/Safe_Hospitality_Part_1_General.pdf) at http://www.hsa.ie/eng/Publications_and_Forms/Publications/Retail/Safe_Hospitality_Part_1_General.pdf

[Workplace Transport Safety – Falls from Vehicles](http://www.hsa.ie/eng/Publications_and_Forms/Publications/Work_Related_Vehicles/Workplace_Transport_Safety_-_Falls_from_Vehicles.pdf) at [http://www.hsa.ie/eng/Publications_and_Forms/Publications/Work_Related_Vehicles/Workplace Transport Safety - Falls from Vehicles.pdf](http://www.hsa.ie/eng/Publications_and_Forms/Publications/Work_Related_Vehicles/Workplace_Transport_Safety_-_Falls_from_Vehicles.pdf)

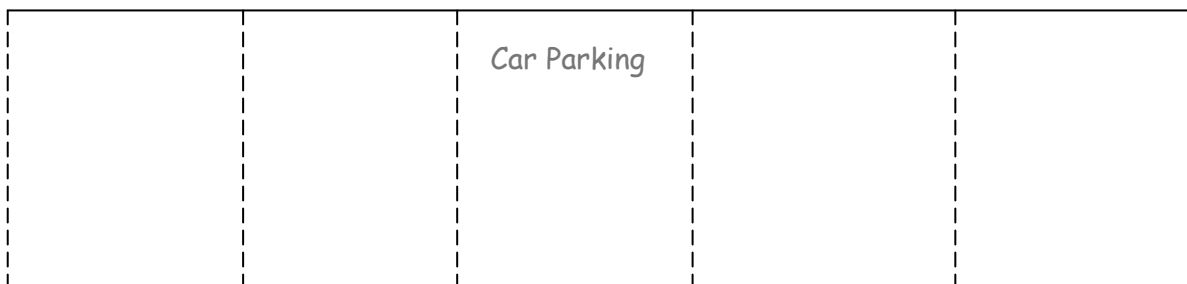
[Retail Sector – Slips, trips and falls](http://www.hsa.ie/eng/Topics/Simple_Safety/Retail/SSDS_R_STF.pdf) simple safety sheet at [http://www.hsa.ie/eng/Topics/Simple_Safety/Retail/SSDS R STF.pdf](http://www.hsa.ie/eng/Topics/Simple_Safety/Retail/SSDS_R_STF.pdf)

[Food and Drink Sector – Slips, trips and falls](http://www.hsa.ie/eng/Topics/Simple_Safety/Simple_Safety_in_Food_and_Drink/Slips,_Trips_and_Falls.pdf) simple safety sheet at [http://www.hsa.ie/eng/Topics/Simple_Safety/Simple Safety in Food and Drink/Slips, Trips and Falls.pdf](http://www.hsa.ie/eng/Topics/Simple_Safety/Simple_Safety_in_Food_and_Drink/Slips,_Trips_and_Falls.pdf)

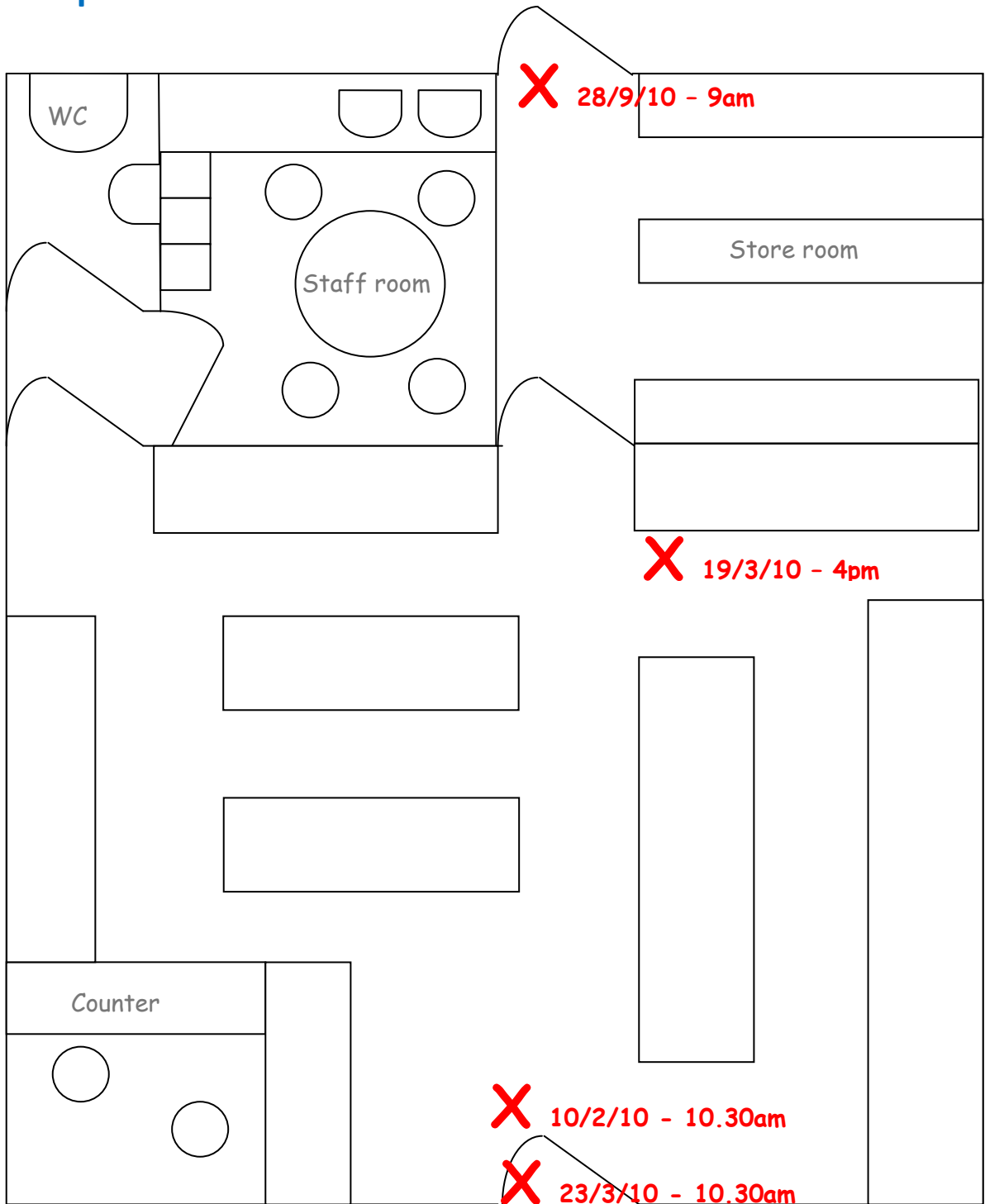
Step 1 Draw a map



Pavement

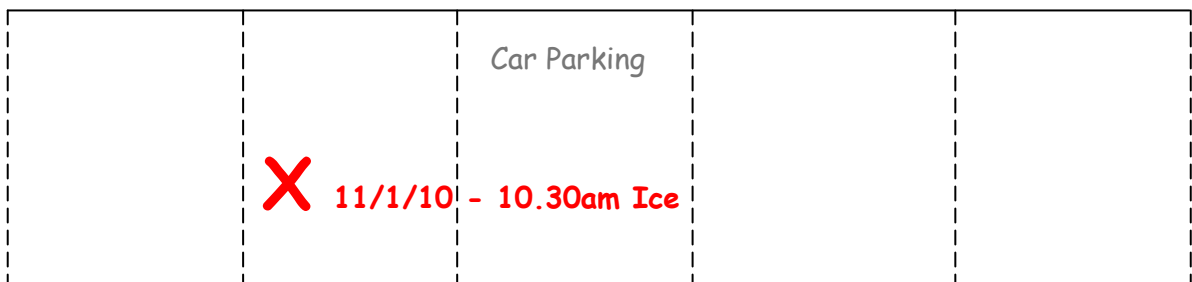


Step 2 Mark Incidents

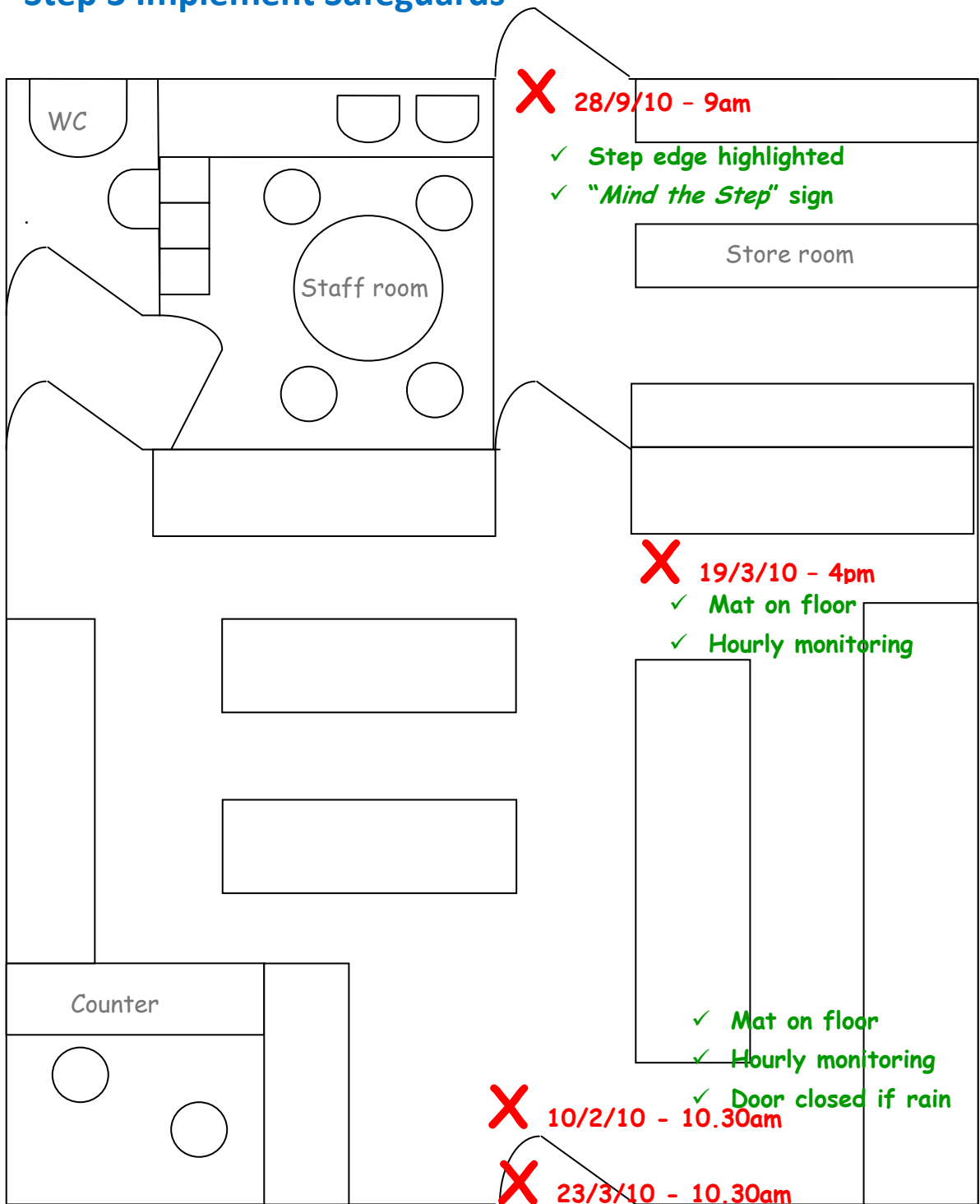


Pavement

X 4/1/10 - 9.30am Ice



Step 3 Implement Safeguards



Pavement

4/1/10 - 9.30am Ice

